

INFORMATION PROVIDED BY THE  
MISSISSIPPI DEPARTMENT OF EMPLOYMENT SECURITY  
Distribution of Mississippi Workers Earning Less Than \$15.00 Per Hour  
September 30, 2021

The State of Mississippi does not have a state department of labor. As such, there is no state minimum wage. Mississippi adheres to the federal minimum wage, which is \$7.25 per hour. The Mississippi Department of Employment Security (MDES) does not enforce the federal minimum wage. The United States Department of Labor enforces the Fair Labor Standards Act (FLSA), which sets basic minimum wage and overtime pay standards. These standards are enforced by the Department's Wage and Hour Division.

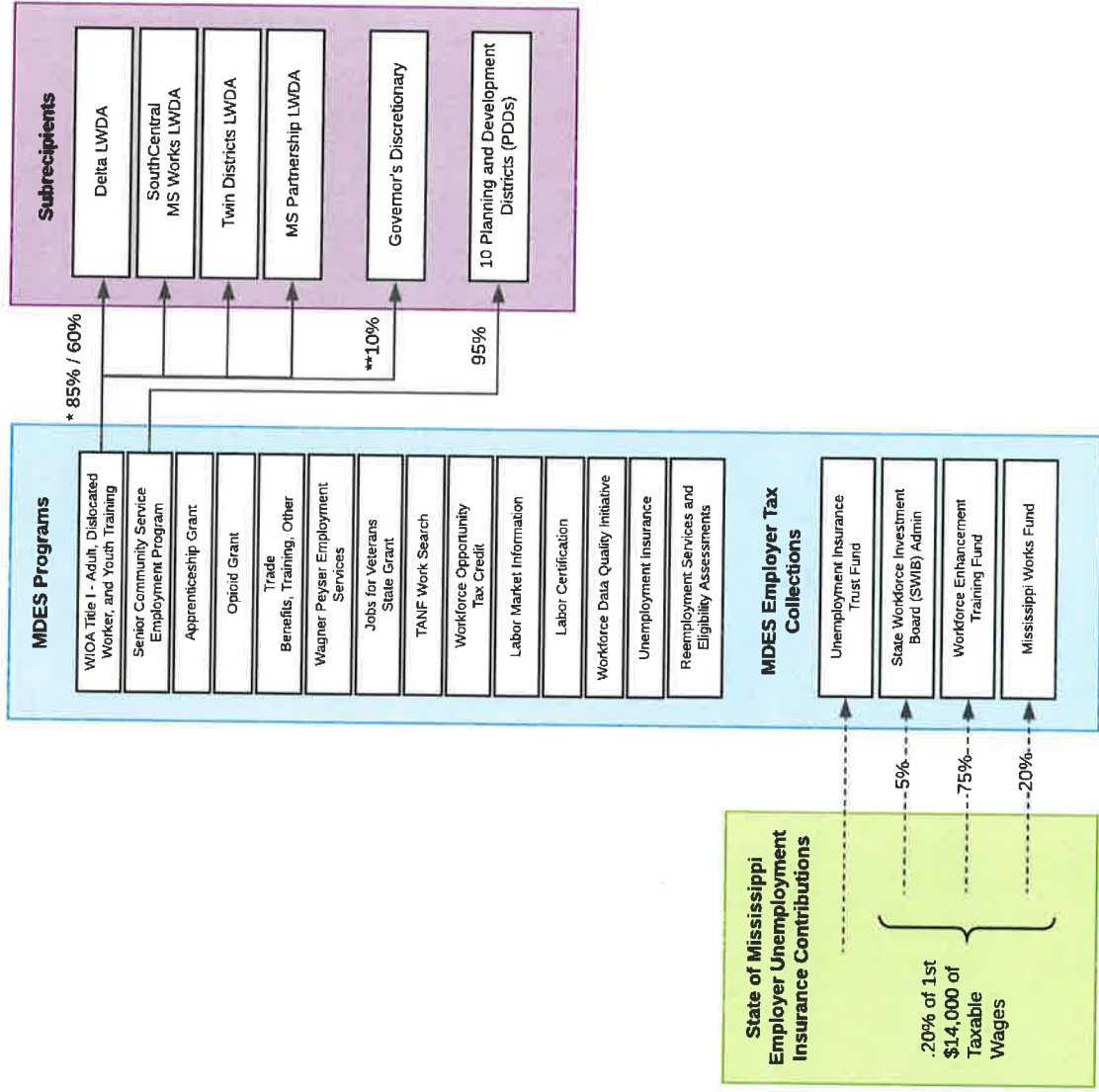
**TABLE 1. DISTRIBUTION OF MISSISSIPPI WORKERS EARNING LESS THAN \$15.00 PER HOUR**

**(AVERAGE, 2016-2020)**

| Hourly Earnings    | Average Number of Mississippi Earners |
|--------------------|---------------------------------------|
| \$7.25             | 26,431                                |
| \$7.26 to \$7.50   | 11,400                                |
| \$7.51 to \$8.00   | 28,060                                |
| \$8.01 to \$8.50   | 21,049                                |
| \$8.51 to \$9.00   | 33,006                                |
| \$9.01 to \$9.50   | 15,979                                |
| \$9.51 to \$10.00  | 49,773                                |
| \$10.01 to \$11.00 | 50,105                                |
| \$11.01 to \$12.00 | 48,611                                |
| \$12.01 to \$13.00 | 42,213                                |
| \$13.01 to \$14.00 | 34,681                                |
| \$14.01 to \$15.00 | 53,990                                |

*Note: This table presents estimates of the average number of Mississippians earning less \$15.00 per hour from 2016-2021. Annual estimates are based on a sample of Mississippi workers surveyed by the U.S. Census Bureau. Earnings for self-employed workers are not included. Source: U.S. Census Bureau, 2021-BLS*

# Flow of Programs at MDES



\* LWDAAs receive 85% of Adult and Youth Funds and 60% of Dislocated Worker Funds and 10% of Adult, Youth, and Dislocated Worker Funds are reserved for Governor's Discretionary projects.  
 \*\* 10% of Adult, Youth, and Dislocated Worker Funds are reserved for Governor's Discretionary projects.

